

CSAMT Glen Lyell 2005 - 6000N
 Conductivity Section
 smooth inversion, no static correction

250 0 250
 metres

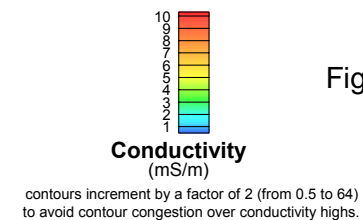
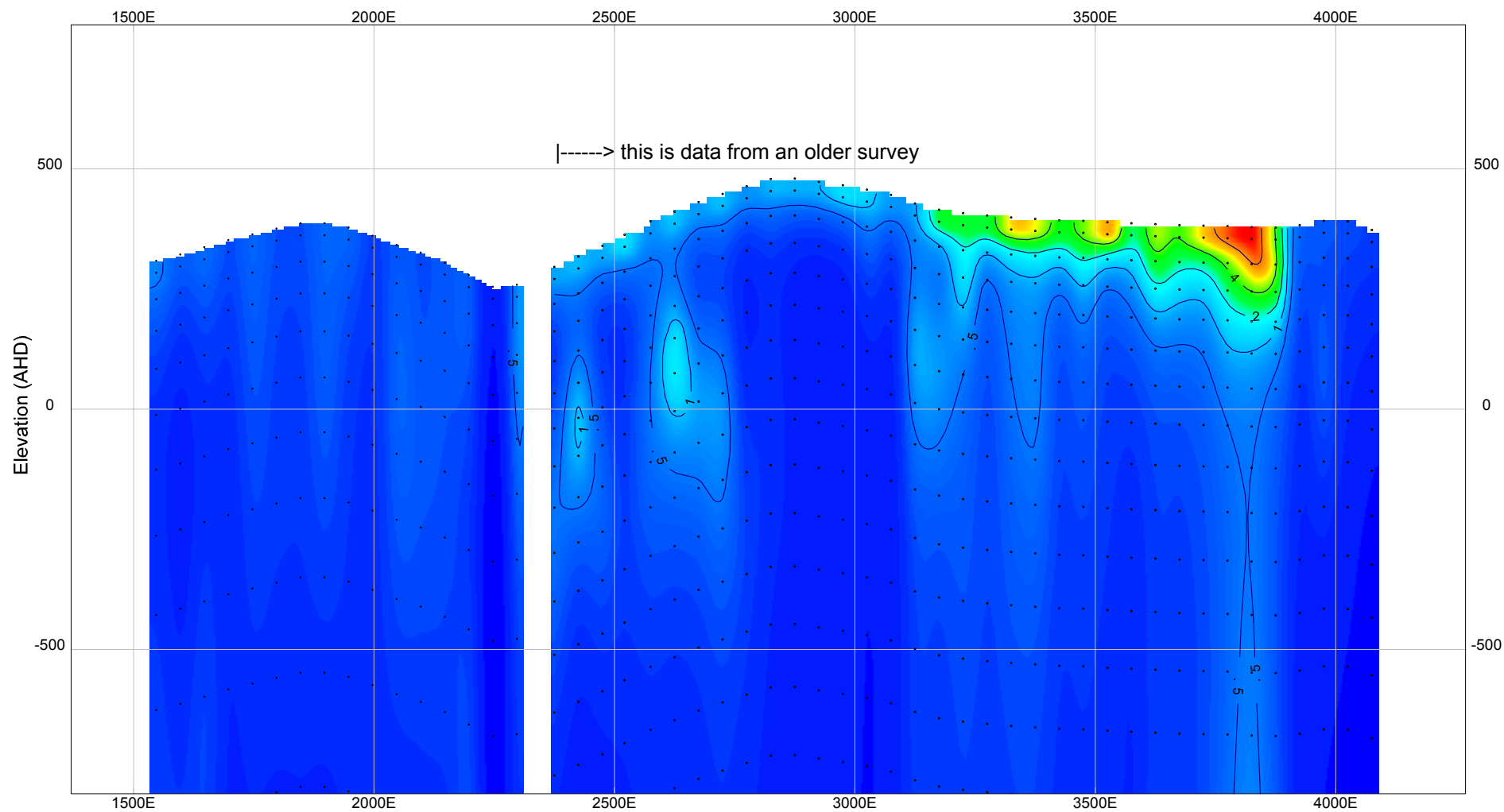


Figure D5



CSAMT Glen Lyell 2005 - 6250N
 Conductivity Section
 smooth inversion, no static correction

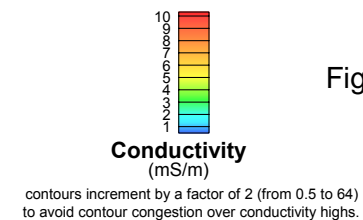
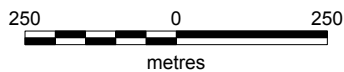
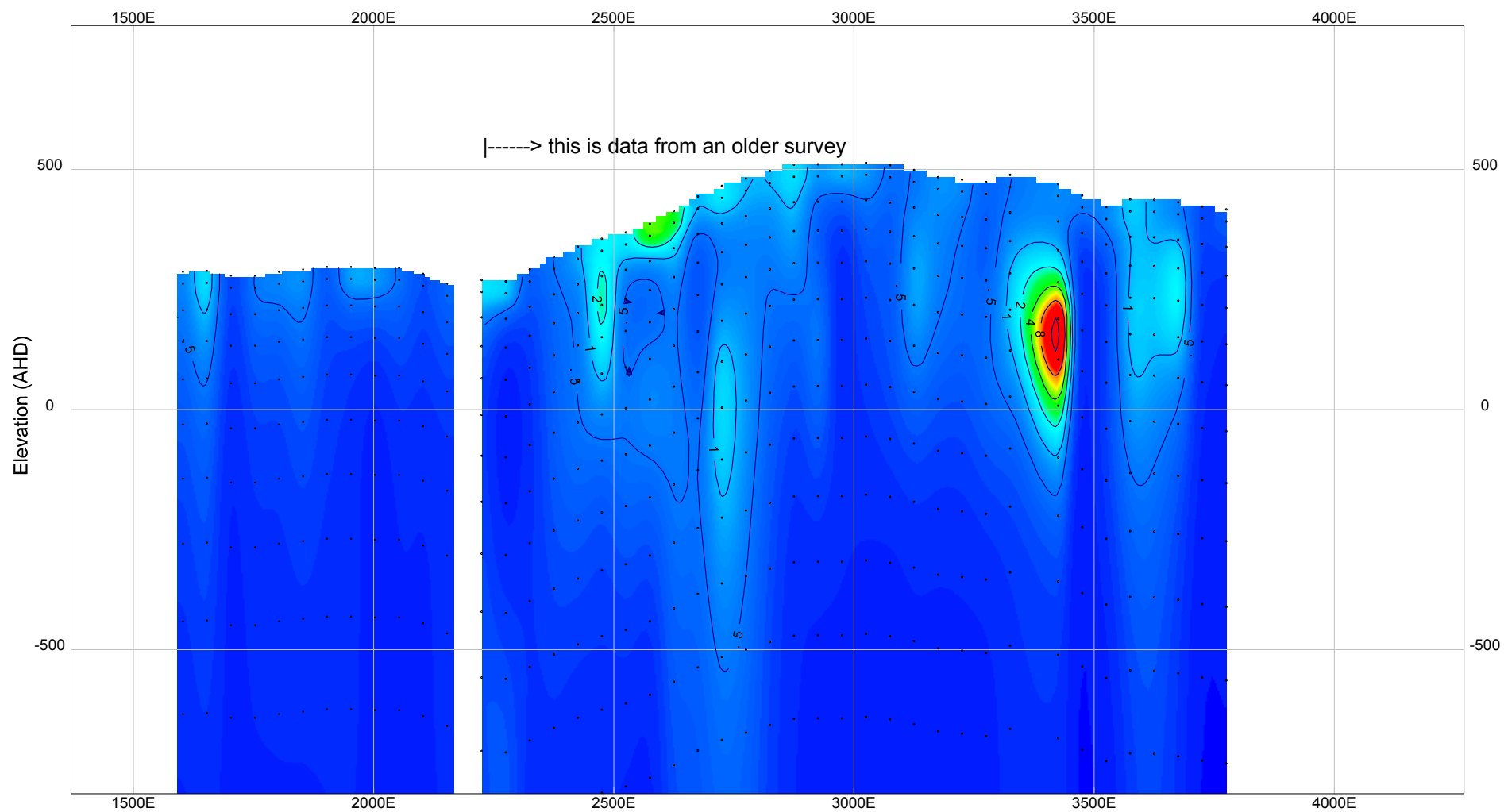
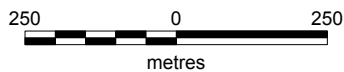
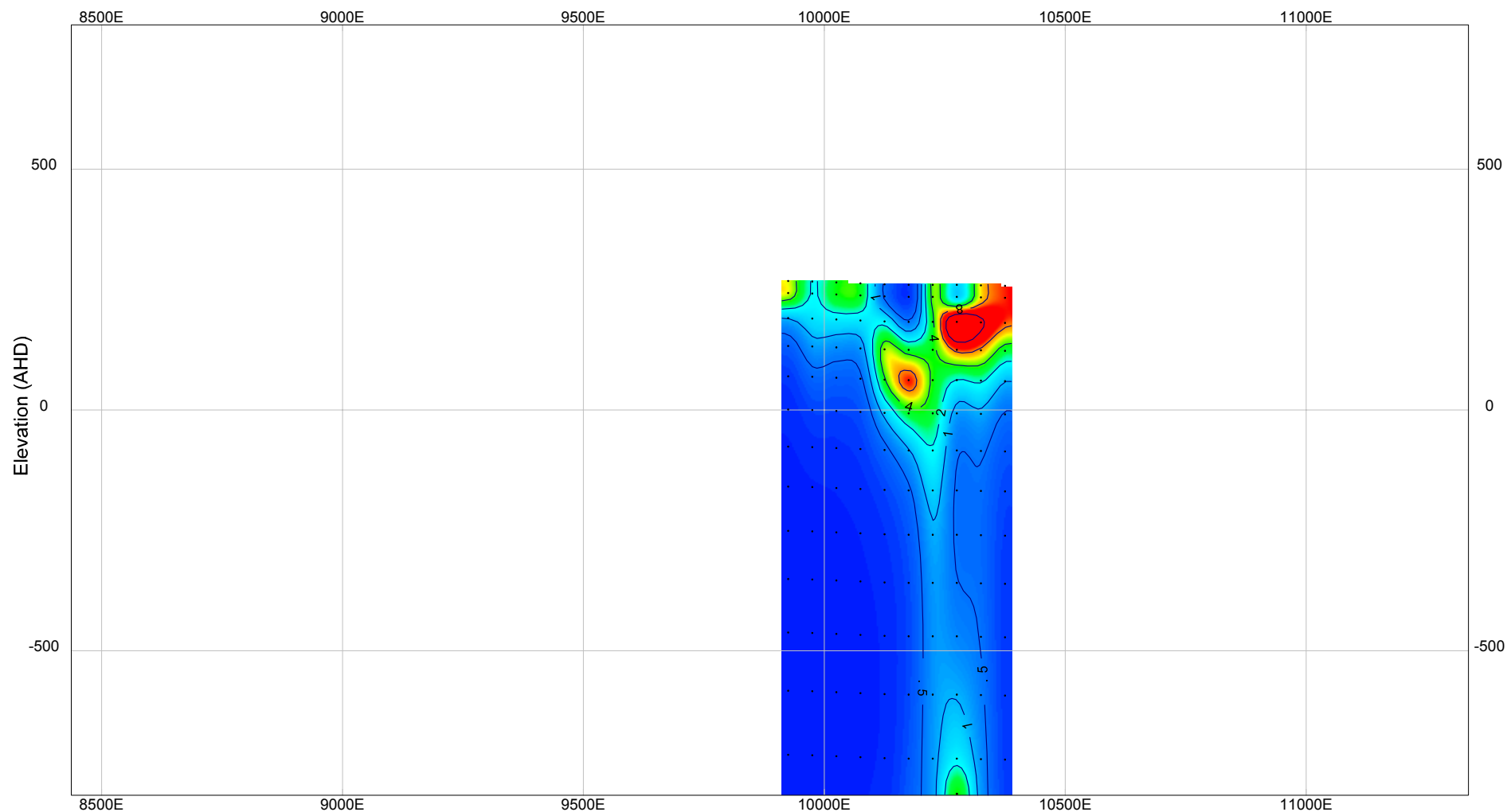


Figure D6



CSAMT Glen Lyell 2005 - 6600N
 Conductivity Section
 smooth inversion, no static correction

Figure D7



CSAMT Chamounix 2005 - Line 1
Conductivity Section
smooth inversion, no static correction

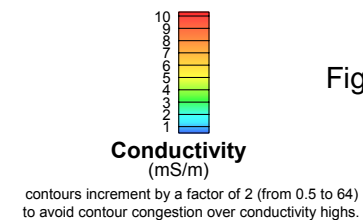
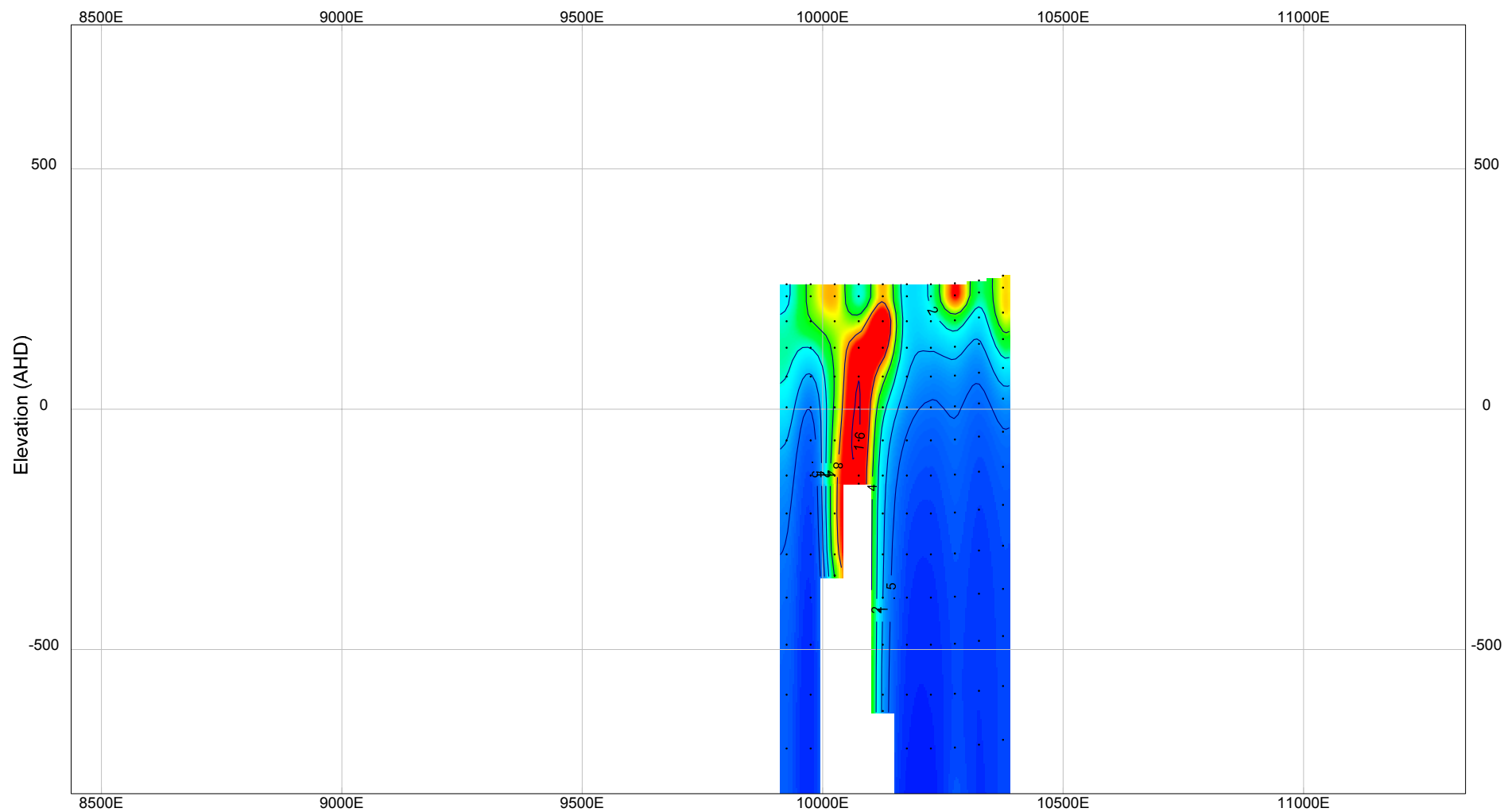
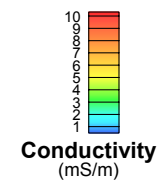


Figure D8

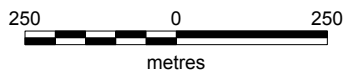
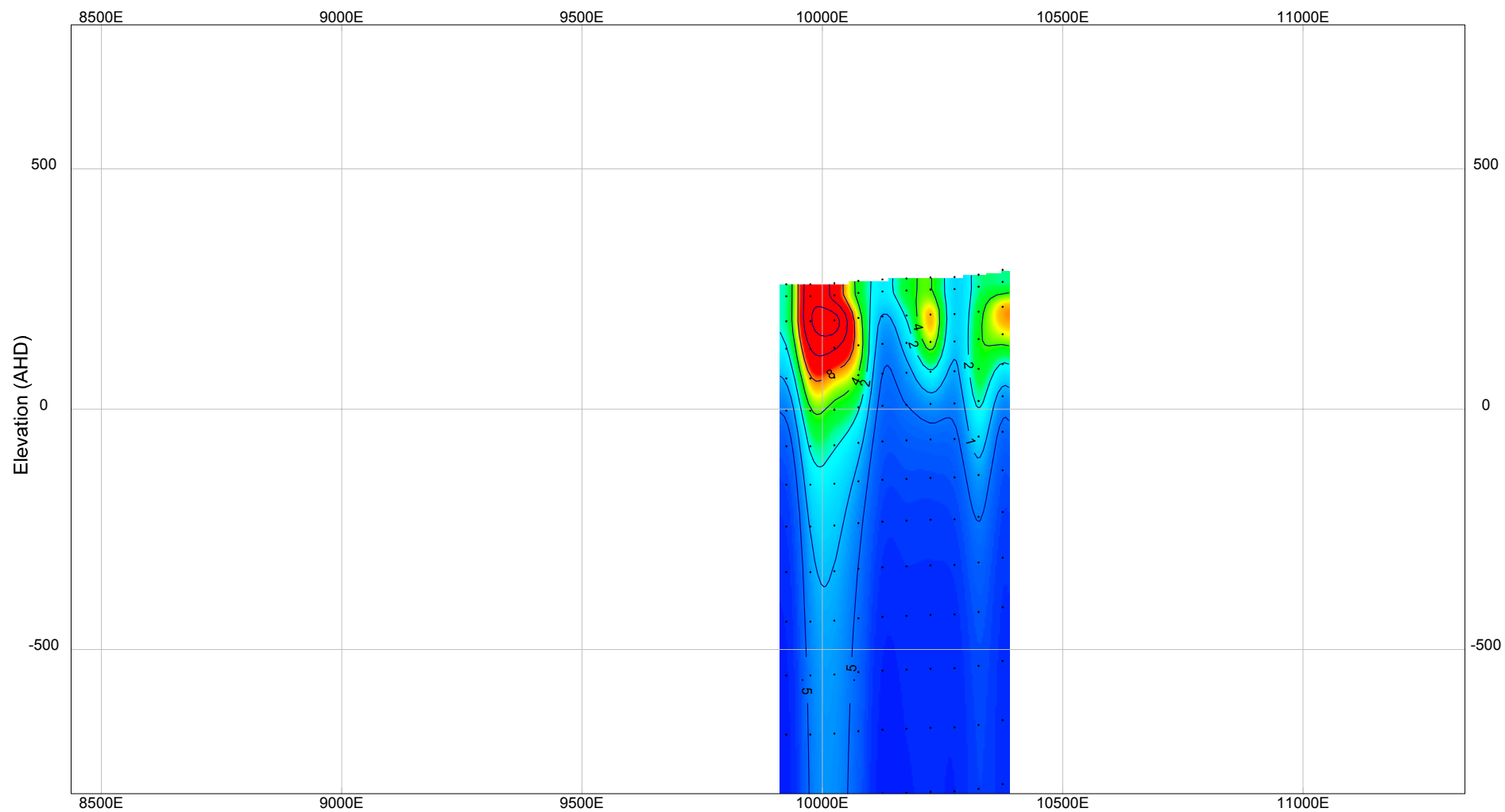


CSAMT Chamounix 2005 - Line 2
 Conductivity Section
 smooth inversion, no static correction

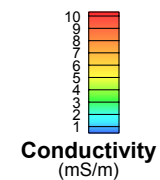
Figure D9



contours increment by a factor of 2 (from 0.5 to 64)
 to avoid contour congestion over conductivity highs.



CSAMT Chamounix 2005 - Line 3
 Conductivity Section
 smooth inversion, no static correction



contours increment by a factor of 2 (from 0.5 to 64)
 to avoid contour congestion over conductivity highs.

Figure D10

